

# 243

2+1 DUBLEX

144m<sup>2</sup>

## DUPLEX VILLA

2 Room - 1 Living Room/Kitchen, 2 Bathroom















Swissôtel Residences Bodrum Beach, a place where you can enjoy the unlimited blue with the sea view and the sea-side settlement. The residences hosts luxury and comfort with a 3500 m<sup>2</sup> private sand beach and 2 landing stages. The complex was built two-storey as a Bodrum tradition. The architectural and residence services offers privilege in every aspect.

Residence 243; has 144 m<sup>2</sup> indoor space, a detached living area by the sea, garden and sea viewed rooms and a comfortable luxurious interior design.



-   
2 BEDROOM
-   
1 DOUBLE,  
1 SINGLE  
BED
-   
1 LIVING  
ROOM
-   
1 KITCHEN
-   
2 BATHROOM
-   
PRIVATE  
PORT &  
CAFE
-   
7/24  
SECURITY
-   
HOTEL  
SERVICE
-   
PRIVATE  
PARKING
-   
CONCIERGE





## FEATURES

Built-in Kitchen & Equipment

Refrigerator

Dishwasher

Coffee Setups and Tea Setups

Cooking and Service Utensils

Washing machine

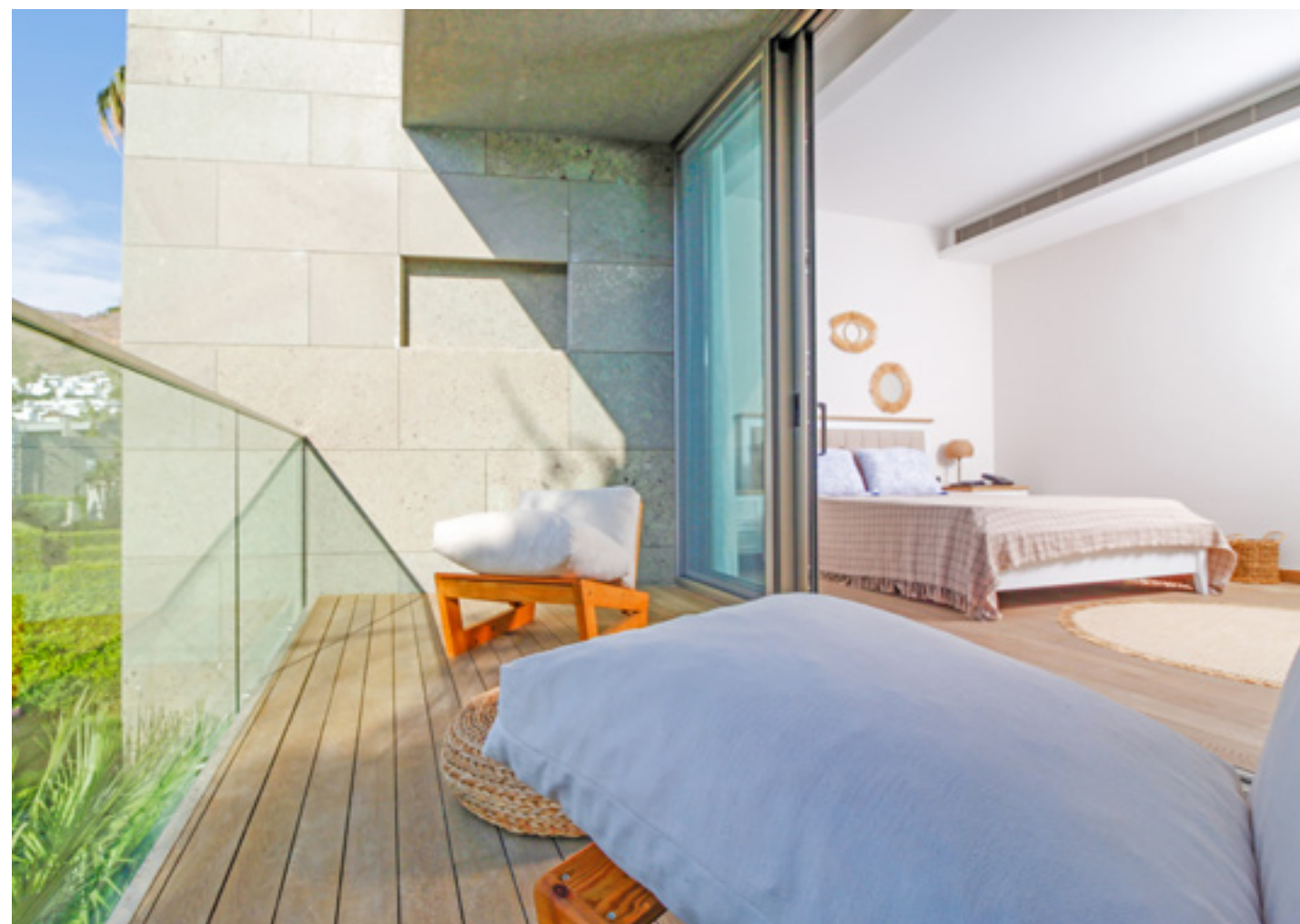
Ironing Set

TV and Satellite System

Bath set (Towel set, bathrobe, hotel  
guest amenities)

Linens set

\* Furniture packages may vary.







For all rentals; outdoor and indoor pools, restaurant-bar, SPA, fitness room, massage rooms, Turkish bath, meeting rooms and other exclusive services and the privilege of Swissôtel are offered.



You will admire the harmony of the colours green and blue while enjoying your holiday at Swissôtel Residences Bodrum Beach. Find the peace and happiness in your holiday!





### SPECIAL SERVICES

Airport Round-trip Transfers  
Weekly Free House Cleaning  
Refrigerator setups for the arrival  
Table Games and Box Games  
Baby bed, baby monitor, baby  
sleeping set  
Extra bed  
Bath set (Towel set, bathrobe, hotel  
guest amenities)  
Concierge Consultancy  
Newspaper and Magazine Service

  
çağdaş villas



